

Alleluya à3

William Byrd (~1543-1623)
The Baldwin Collection of Motets No. 175

A T B

9 Confitemini domino

17 Alleluya

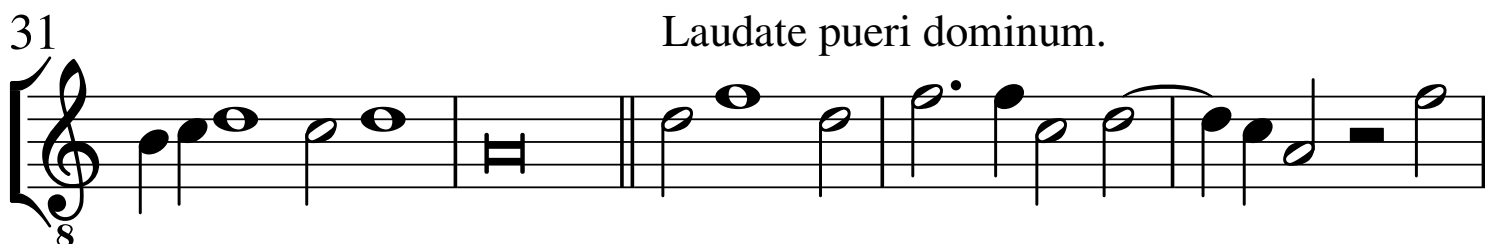
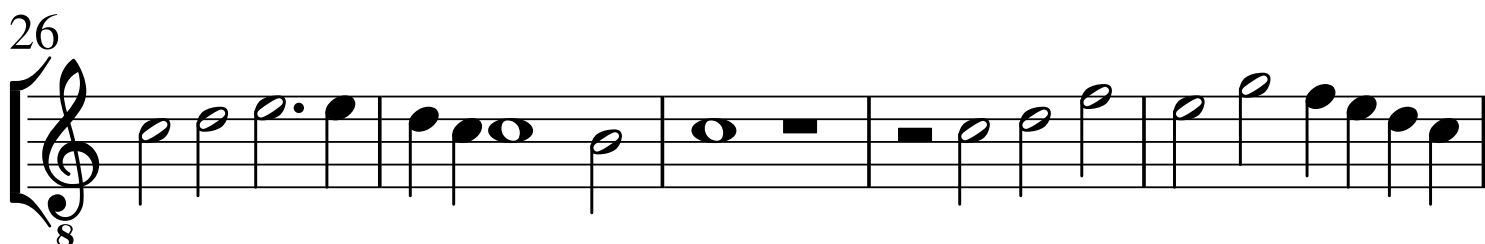
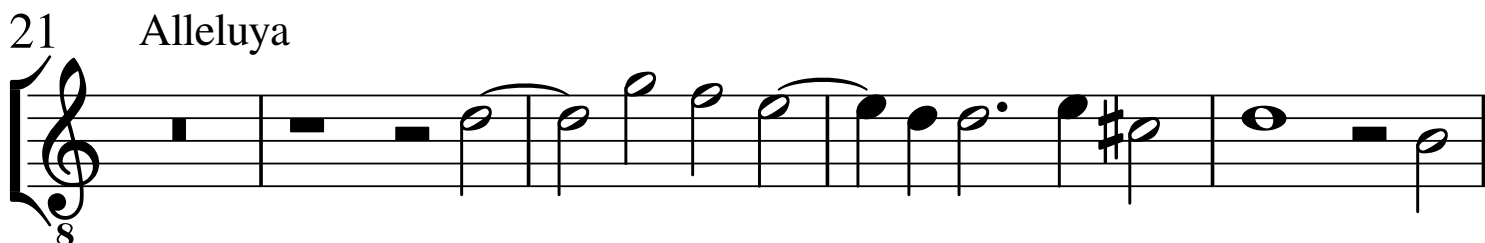
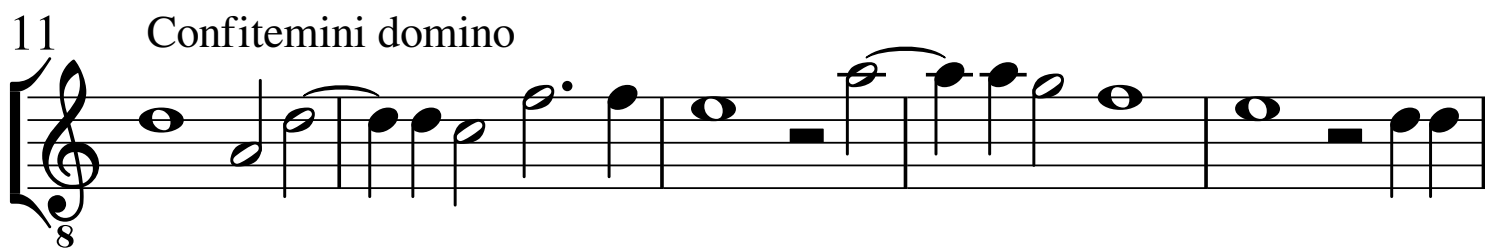
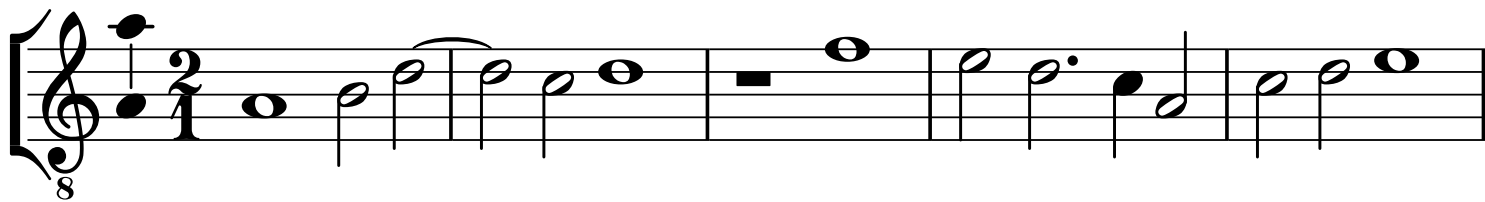
25

33 Laudate pueri dominum.

Alto

Alleluya à3

William Byrd (~1543-1623)
The Baldwin Collection of Motets No. 175



Tenor

Alleluya à3

William Byrd (~1543-1623)
The Baldwin Collection of Motets No. 175

6⁸

11⁸ Confitemini domino

16⁸

21⁸ Alleluya

25⁸

29⁸

33⁸ Laudate pueri dominum.

38⁸

Basso

Alleluya à3

William Byrd (~1543-1623)
The Baldwin Collection of Motets No. 175

6

6

[illegible]

16


Example 10.10 (continued)

[illegible]

26

Musical notation for measure 26, featuring a bass clef and a key signature of one sharp (F#). The melody consists of eighth notes, quarter notes, and half notes, ending with a double bar line.

31 Laudate pueri dominum.

[illegible]